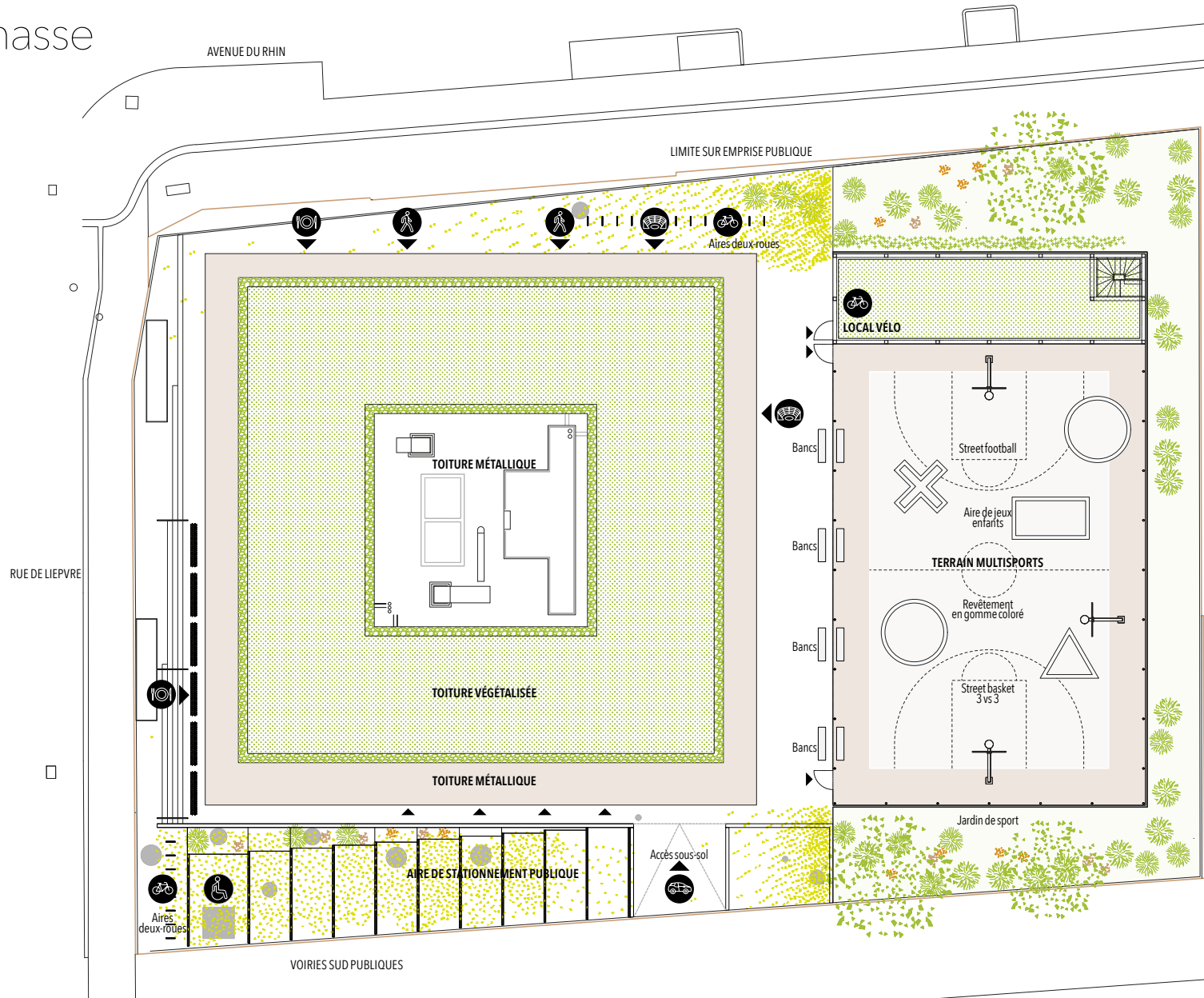


CAHIER DES PLANS

CUBE STRASBOURG

CUBE

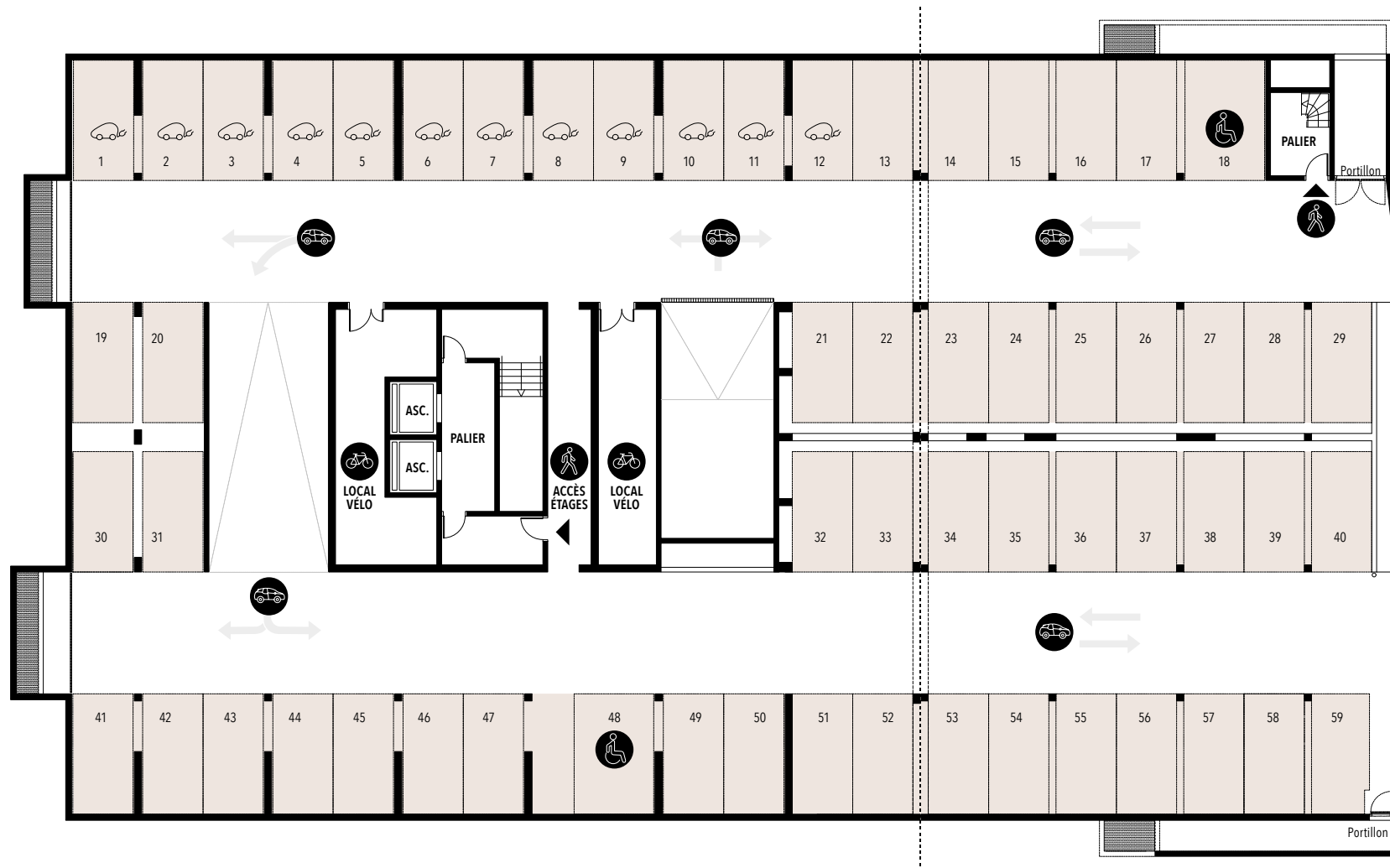
Plan masse



CUBE

Stationnement en sous-sol

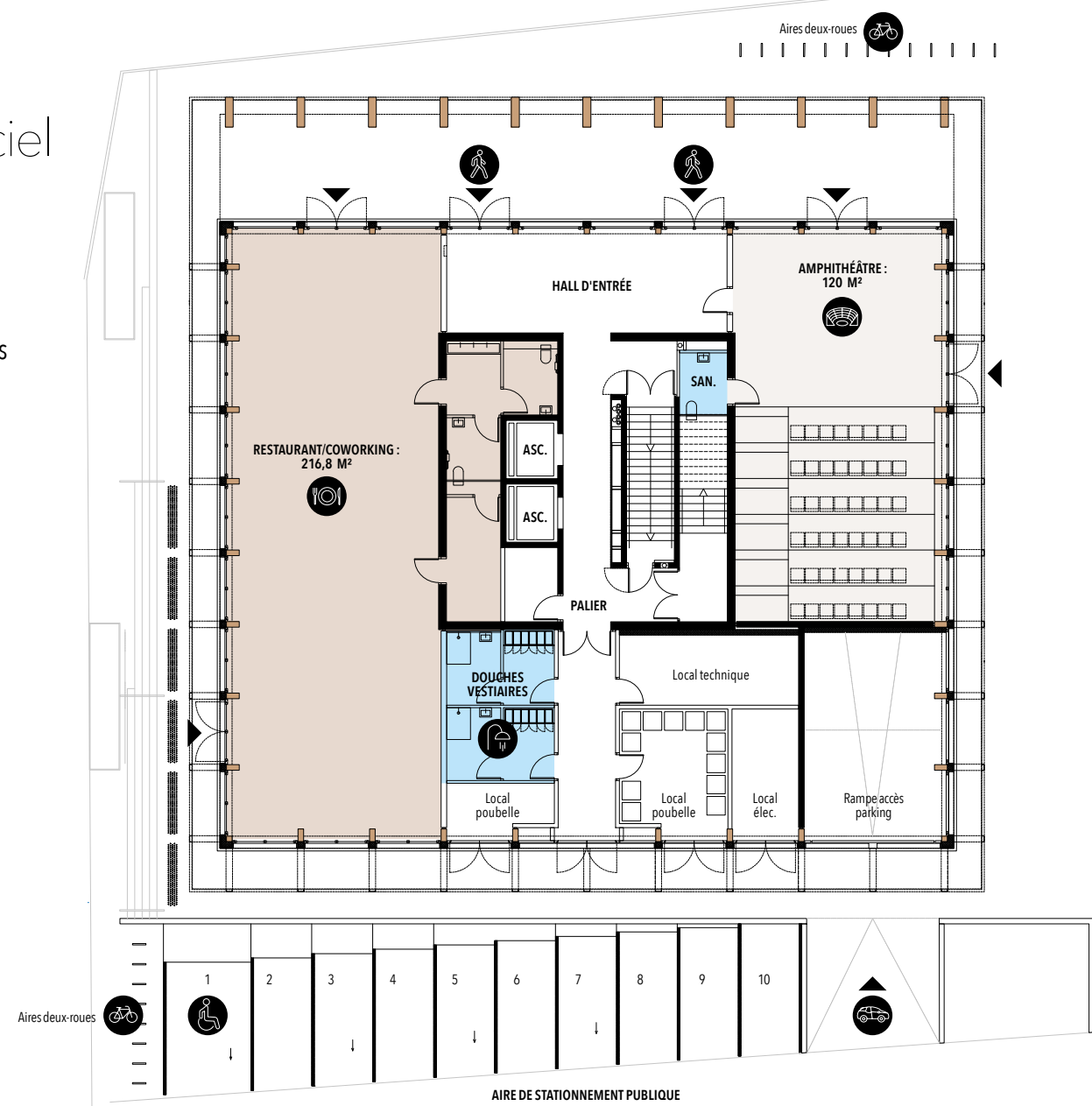
59 places de parking en sous-sol dont 2 PMR et 12 IRVE



CUBE

En RDC,
un socle serviciel
qui accueille :

- Un restaurant/coworking et un amphithéâtre
- Douches et vestiaires
- 10 places de parking publiques en extérieur dont 1 PMR
- 2 aires deux-roues

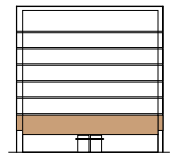
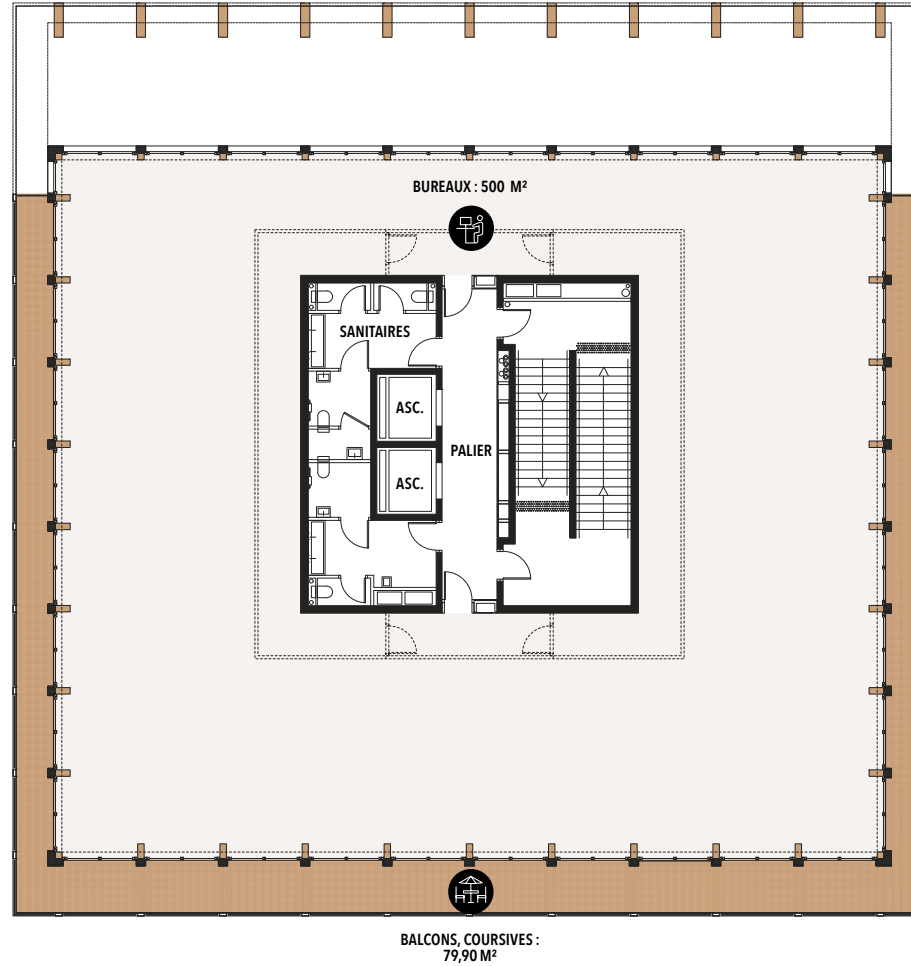


CUBE

Niveau : R+1

Surface totale locative : 646,34 m²

Balcons, coursives : 79,90 m²

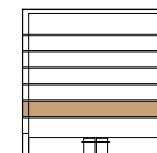
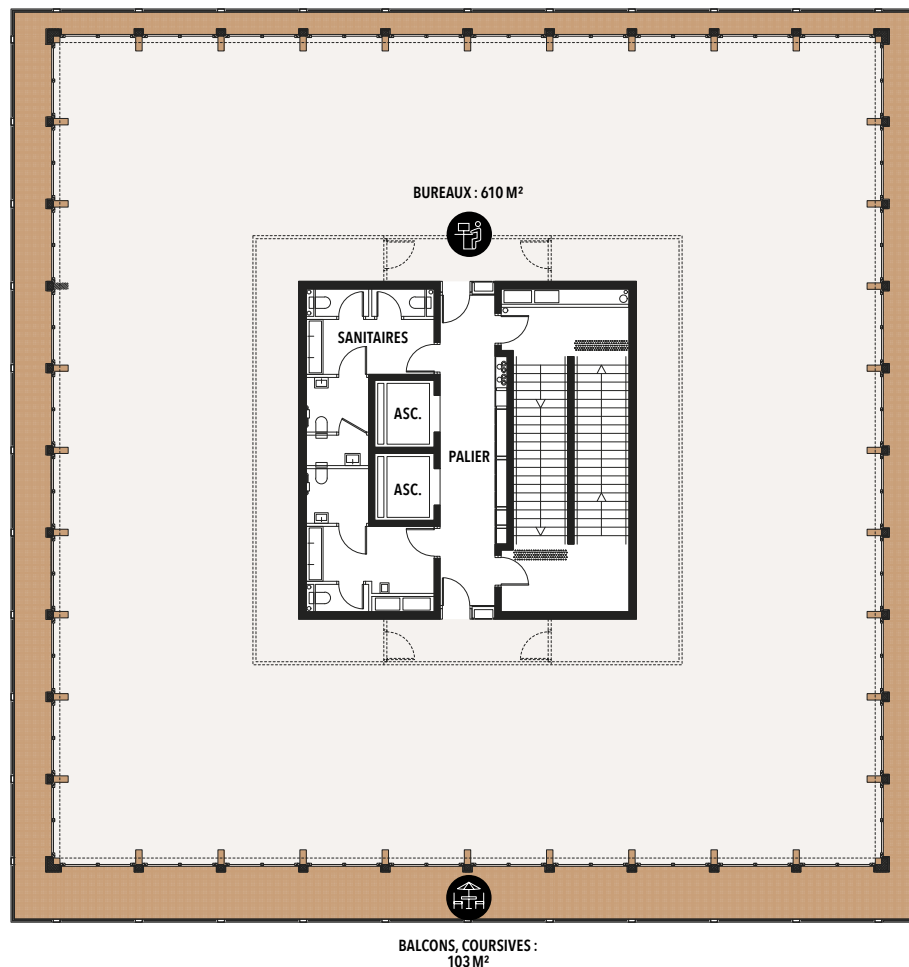


CUBE

Niveau : R+2

Surface totale locative : 783,66 m²

Balcons, coursives : 103 m²

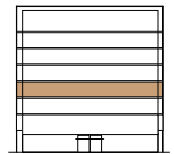
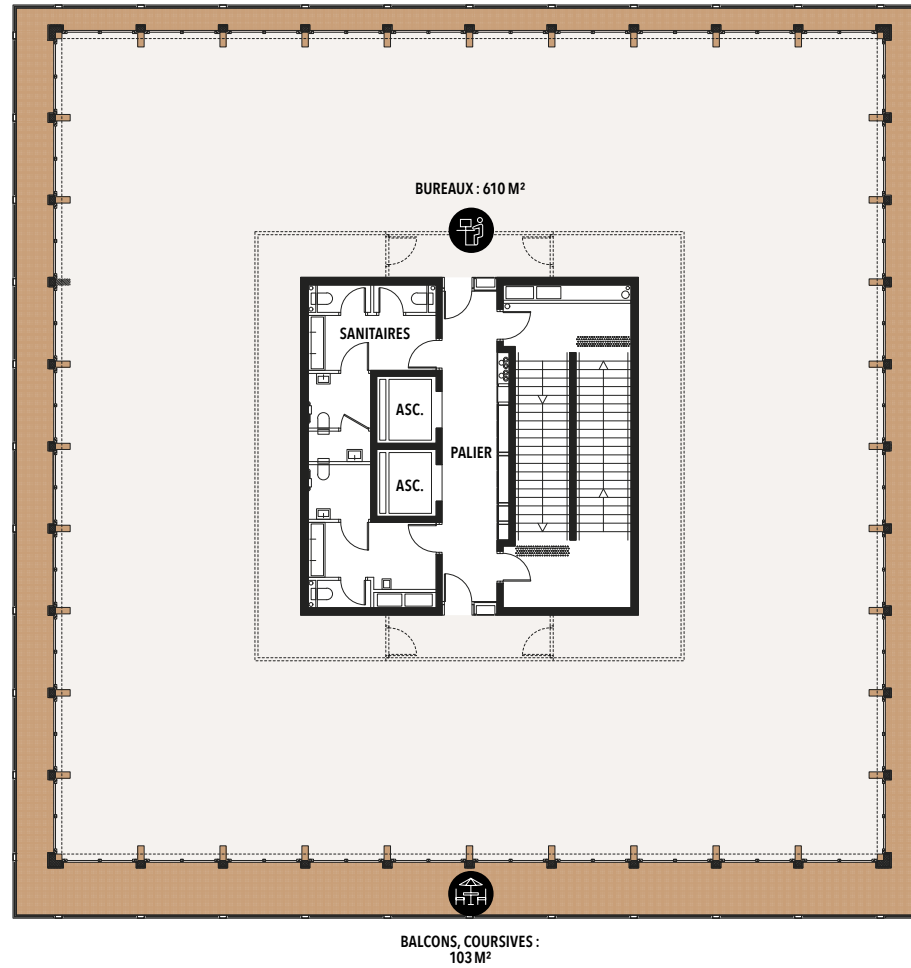


CUBE

Niveau : R+3

Surface totale locative : 783,66 m²

Balcons, coursives : 103 m²

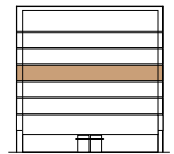
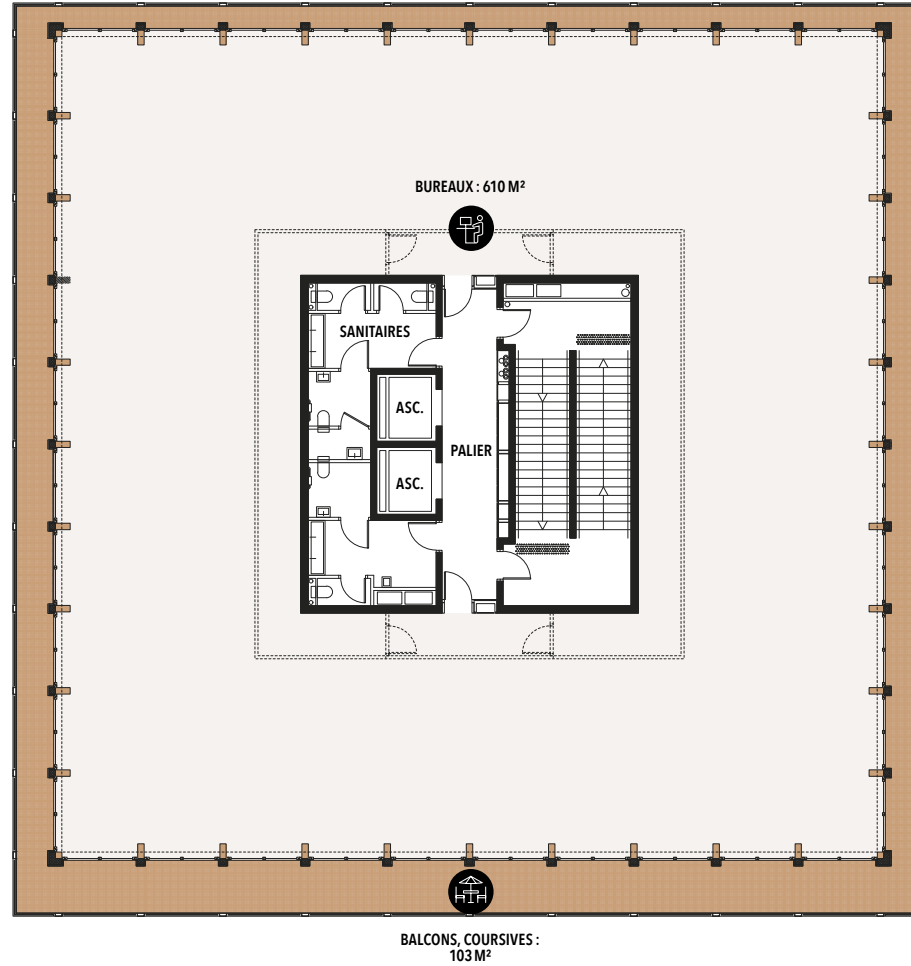


CUBE

Niveau : R+4

Surface totale locative : 783,66 m²

Balcons, coursives : 103 m²

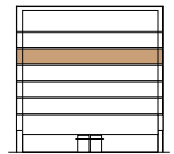
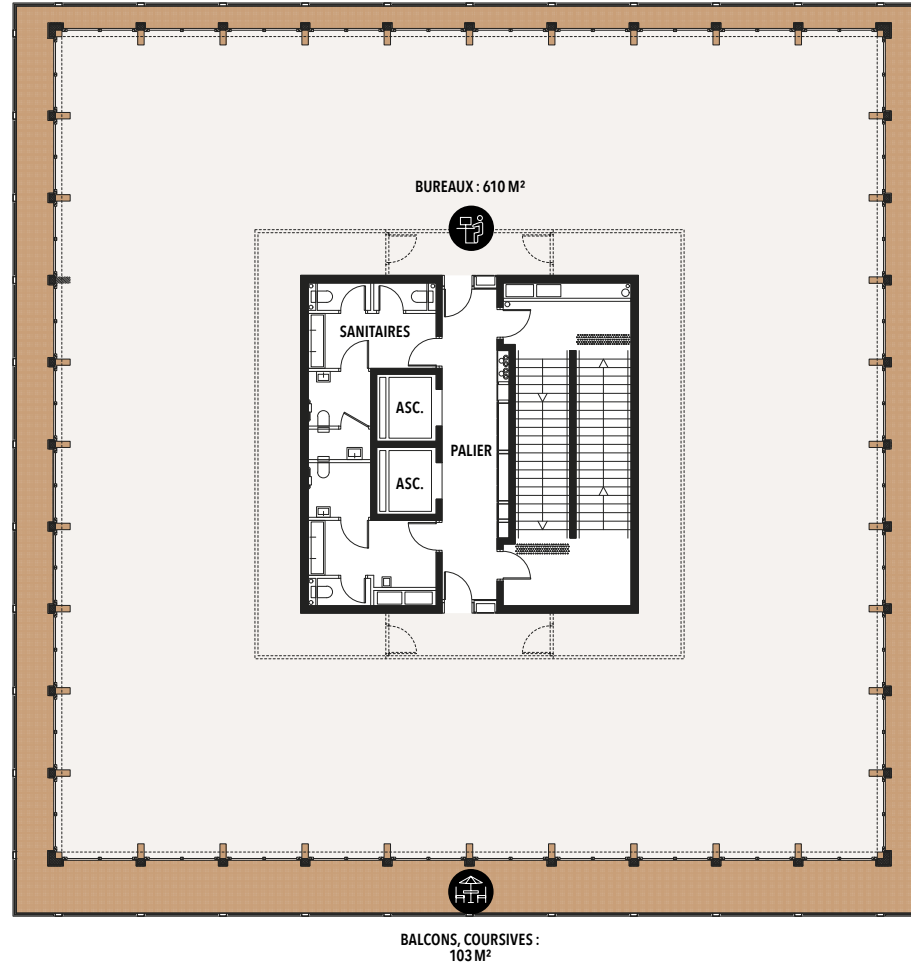


CUBE

Niveau : R+5

Surface totale locative : 783,66 m²

Balcons, coursives : 103 m²



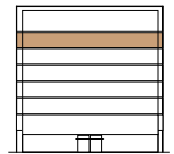
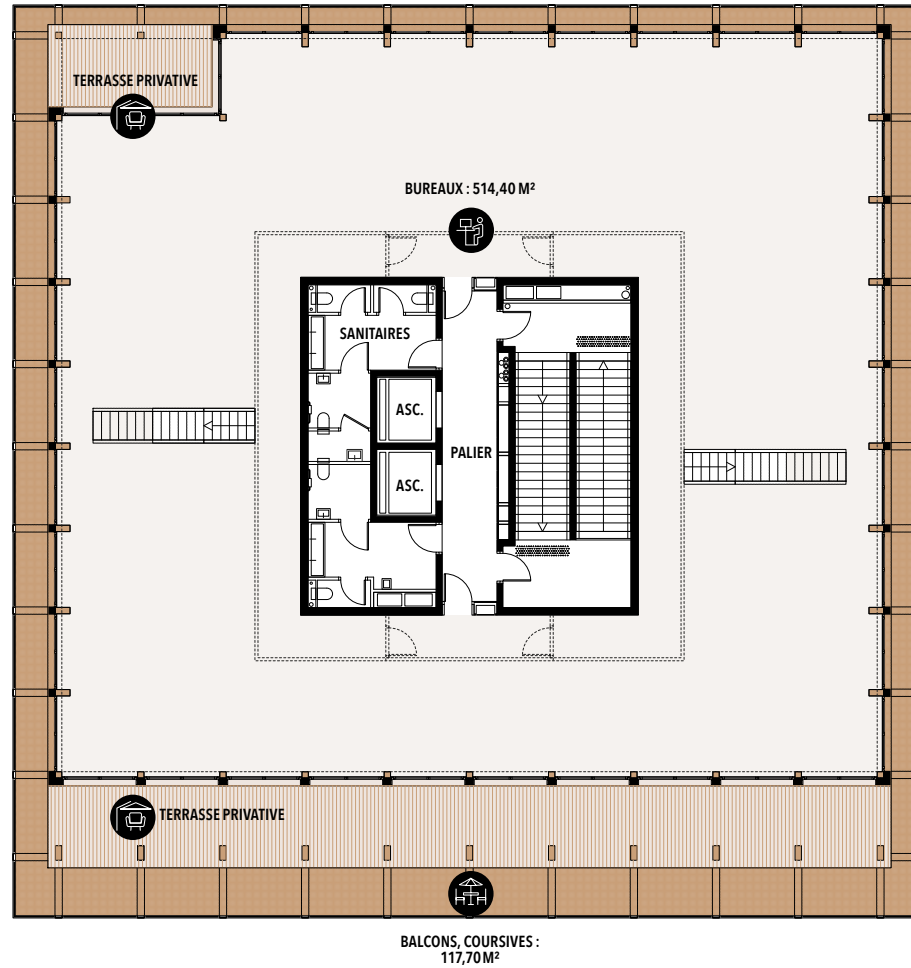
CUBE

Niveau : R+6

Surface totale locative R+6 et R+7 : 1.316,03 m²

Balcons, coursives : 117,70 m²

Terrasses privées : 76 m²

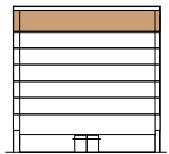
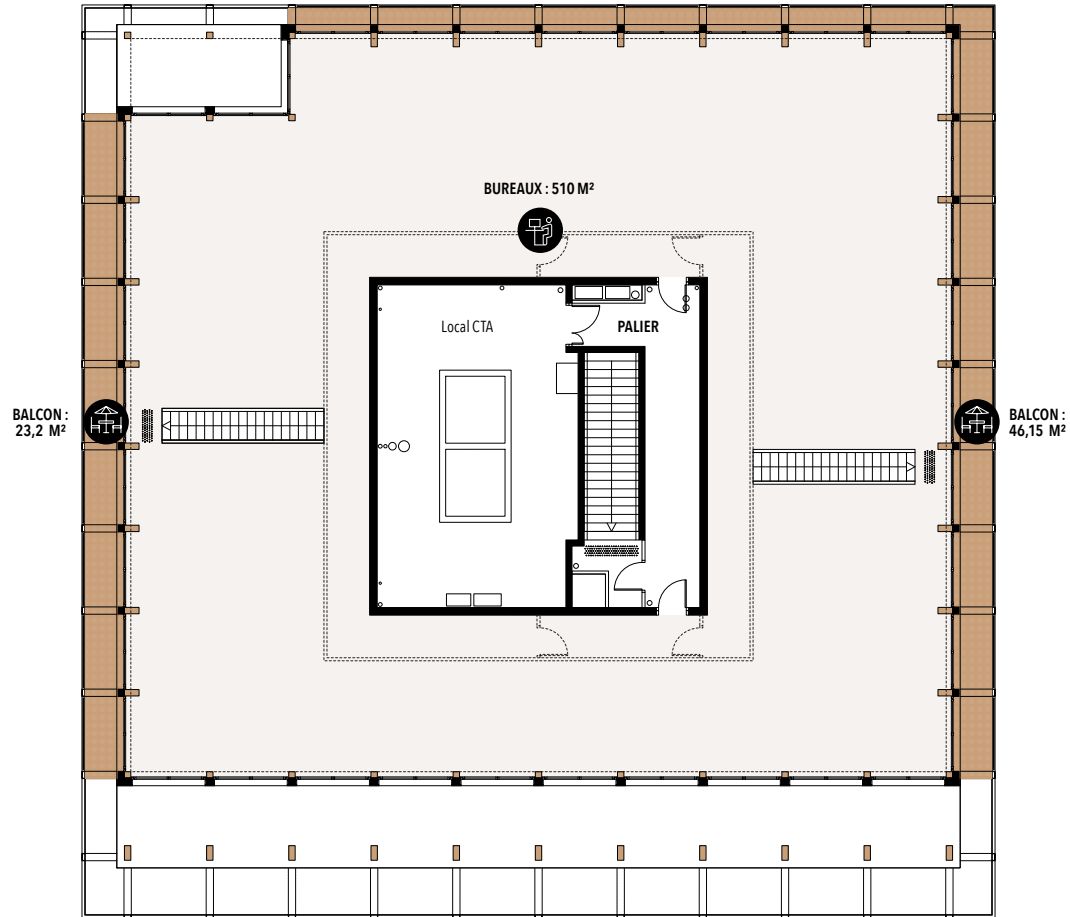


CUBE

Niveau : R+7

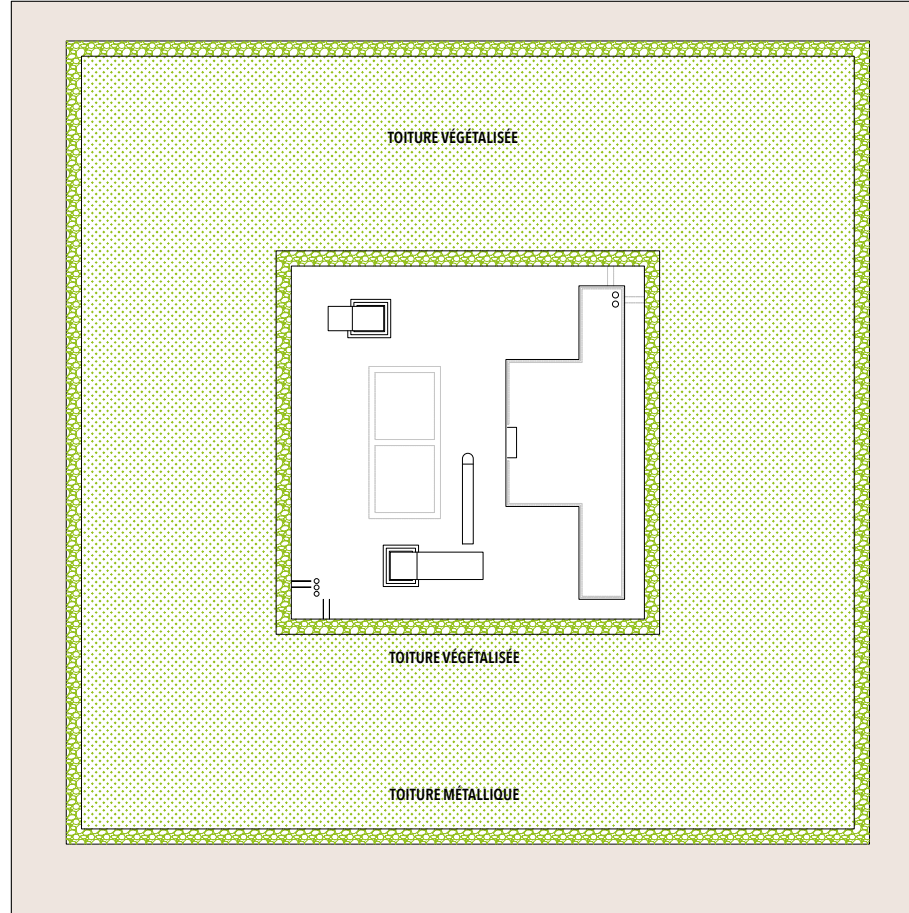
Surface totale locative R+6 et R+7 : 1.316,03 m²

Balcons, coursives : 69,35 m²



CUBE

Plan toiture





S.A. AU CAPITAL DE 281.506.400 €

DIRECTION RÉGIONALE
GRAND-EST
1 ALLÉE DE LA ROBERTSAU
67000 STRASBOURG
+33 (0)3 88 60 27 27

SIÈGE
16, PLACE VENDÔME
75001 PARIS
T. +33 (0)1 44 55 07 07

WWW.LAZARD-SA.COM